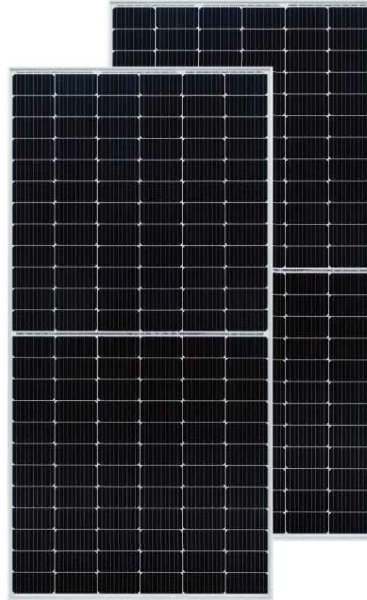


# BISTAR

TP6L72M  
TP6L72M(H) **144 half-cell**

435 - 455W

9BB half-cut mono perc



## KEY FEATURES



### 9BB half-cut cell technology

New circuit design, lower internal current, lower Rs loss  
Ga doped wafer, attenuation < 2% (1st year) / ≤ 0.55% (Linear)



### Significantly lower the risk of hot spot

Special circuit design with much lower hot spot temperature



### Excellent Anti-PID performance

2 times of industry standard Anti-PID test by TUV SUD



### Wider application

No water-permeability and high wear-resistance,  
can be widely used in high-humid, windy and dusty area



### IP68 junction box

High waterproof level

## SYSTEM & PRODUCT CERTIFICATES

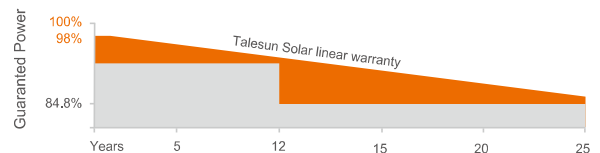
- IEC 61215 / IEC 61730 / UL 61730
- ISO 9001: 2015 Quality Management System
- ISO 14001: 2015 Environment Management System
- ISO 45001: 2018 Occupational Health and Safety Management Systems



## PERFORMANCE WARRANTY



- Linear Performance Warranty
- Standard Performance Warranty



## ELECTRICAL PARAMETERS

### Performance at STC (Power Tolerance 0 ~ +3%)

|                               |       |       |       |       |       |
|-------------------------------|-------|-------|-------|-------|-------|
| Maximum Power (Pmax/W)        | 435   | 440   | 445   | 450   | 455   |
| Operating Voltage (Vmpp/V)    | 40.3  | 40.5  | 40.7  | 40.9  | 41.1  |
| Operating Current (Impp/A)    | 10.80 | 10.87 | 10.94 | 11.01 | 11.08 |
| Open-Circuit Voltage (Voc/V)  | 49.0  | 49.2  | 49.4  | 49.6  | 49.8  |
| Short-Circuit Current (Isc/A) | 11.33 | 11.40 | 11.47 | 11.54 | 11.61 |
| Module Efficiency ηm(%)       | 20.0  | 20.2  | 20.4  | 20.7  | 20.9  |

### Performance at NMOT

|                               |      |      |      |      |      |
|-------------------------------|------|------|------|------|------|
| Maximum Power (Pmax/W)        | 324  | 328  | 332  | 335  | 339  |
| Operating Voltage (Vmpp/V)    | 37.6 | 37.8 | 38.0 | 38.2 | 38.4 |
| Operating Current (Impp/A)    | 8.62 | 8.67 | 8.73 | 8.78 | 8.84 |
| Open-Circuit Voltage (Voc/V)  | 45.6 | 45.8 | 46.0 | 46.2 | 46.4 |
| Short-Circuit Current (Isc/A) | 9.15 | 9.20 | 9.26 | 9.32 | 9.37 |

STC: Irradiance 1000W/m<sup>2</sup>, Cell Temperature 25°C, Air Mass AM1.5 NMOT: Irradiance at 800W/m<sup>2</sup>, Ambient Temperature 20°C, Air Mass AM1.5, Wind Speed 1m/s

## MECHANICAL SPECIFICATION

|                                 |   |
|---------------------------------|---|
| Cell Type                       | Monocrystalline   |
| Cell Dimensions                 | 166*166mm   |
| Cell Arrangement                | 144 (6*24)  |
| Weight                          | 25.5kg (56.22lbs)   |
| Module Dimensions               | 2094*1038*35mm (82.44*40.87*1.38inches)                     |
| Cable Length                    | Portrait 300mm/Landscape 1200mm/Customized                  |
| Cable Cross Section Size        | TUV: 4mm <sup>2</sup> (0.006inches <sup>2</sup> )/UL: 12AWG |
| Front Glass                     | 3.2mm (0.13inches) AR Coating Tempered Glass                |
| No. of Bypass Diodes            | 3   |
| Packing Configuration (1)       | 31pcs/carton, 682pcs/40hq                                   |
| Packing Configuration (for USA) | 31pcs/carton, 682pcs/40hq                                   |
| Frame                           | Anodized Aluminium Alloy                                    |
| Junction Box                    | IP68  |

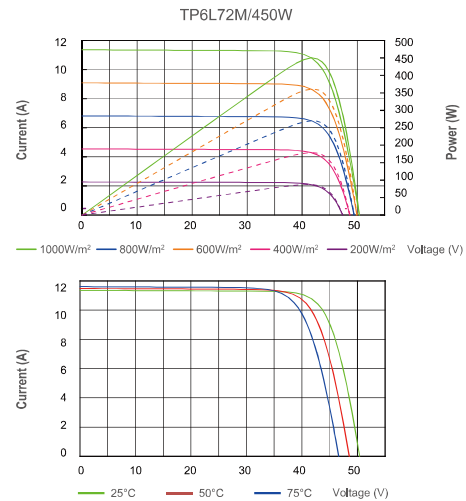
## OPERATING CONDITIONS

|                        |  |
|------------------------|--|
| Maximum System Voltage | 1000V/1500V/DC(IEC)                        |
| Operating Temperature  | -40°C ~ +85°C                              |
| Maximum Series Fuse    | 20A  |
| Static Loading         | Snow Loading: 5400Pa/ Wind Loading: 2400Pa |
| Conductivity at Ground | ≤0.1Ω                                      |
| Safety Class           | II   |
| Resistance             | ≥100MΩ                                     |
| Connector              | T01/LJQ-3-CSY/MC4/MC4-EVO2                 |

## TEMPERATURE COEFFICIENT

|                              |            |
|------------------------------|------------|
| Temperature Coefficient Pmax | -0.36%/°C  |
| Temperature Coefficient Voc  | -0.26%/°C  |
| Temperature Coefficient Isc  | +0.043%/°C |
| NMOT                         | 43±2°C     |

## I-V CURVE



## TECHNICAL DRAWINGS

