

产品规格书

Product Specification



QC4.10-cds 连接器
QC4.10-cds connector

承认签章 (Confirmation)					
快可承认 (QC Solar confirmation)			客户承认 (Customer confirmation)		
批准 Approved by	审核 Audited by	设计 Designed by	采购 Purchased by	品保 Quality Assured by	技术 Technical verified by

目录

- 01/ 产品外观及设计性能参数 / Product appearance and technical parameters 01
- 02/ 连接器 BOM 清单 / Connector BOM List 03
- 03/ 连接器图纸 / Drawing of connector 04
- 04/ 连接器证书 / Certificates of connector 06

1. 产品外观及设计性能参数 / Product appearance and technical parameters



技术参数 Product Specifications

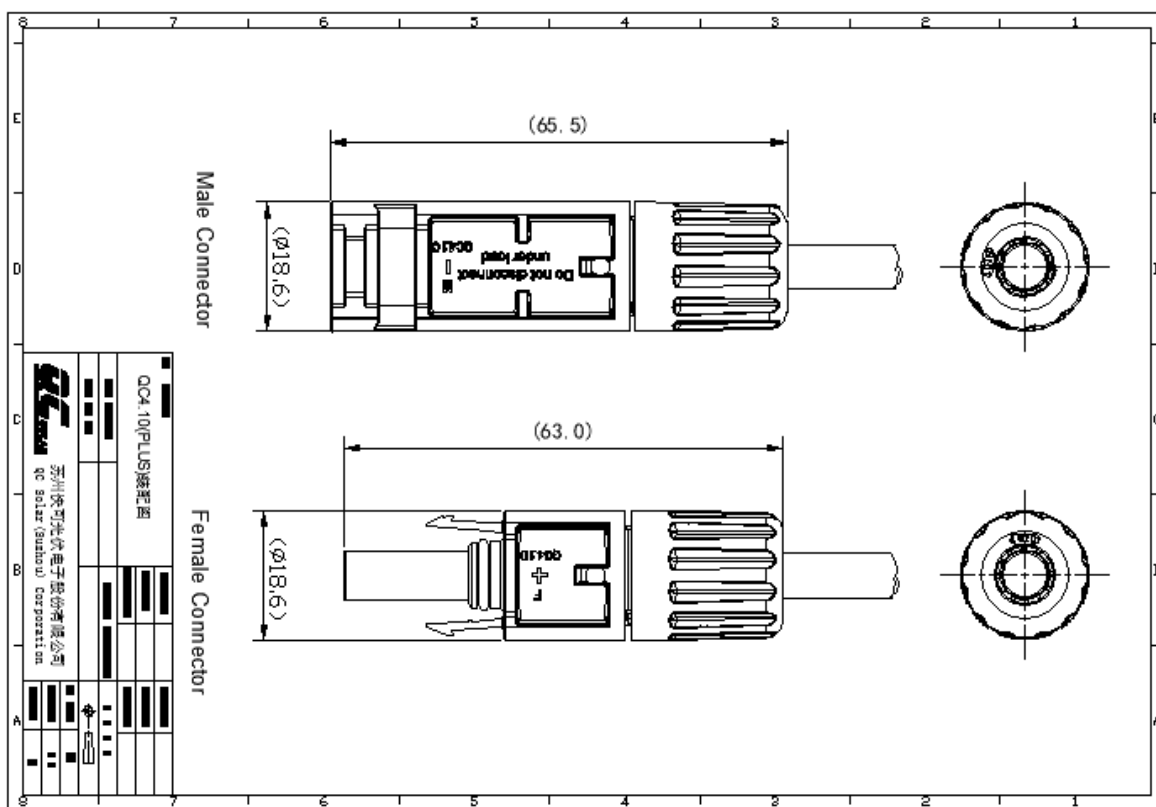
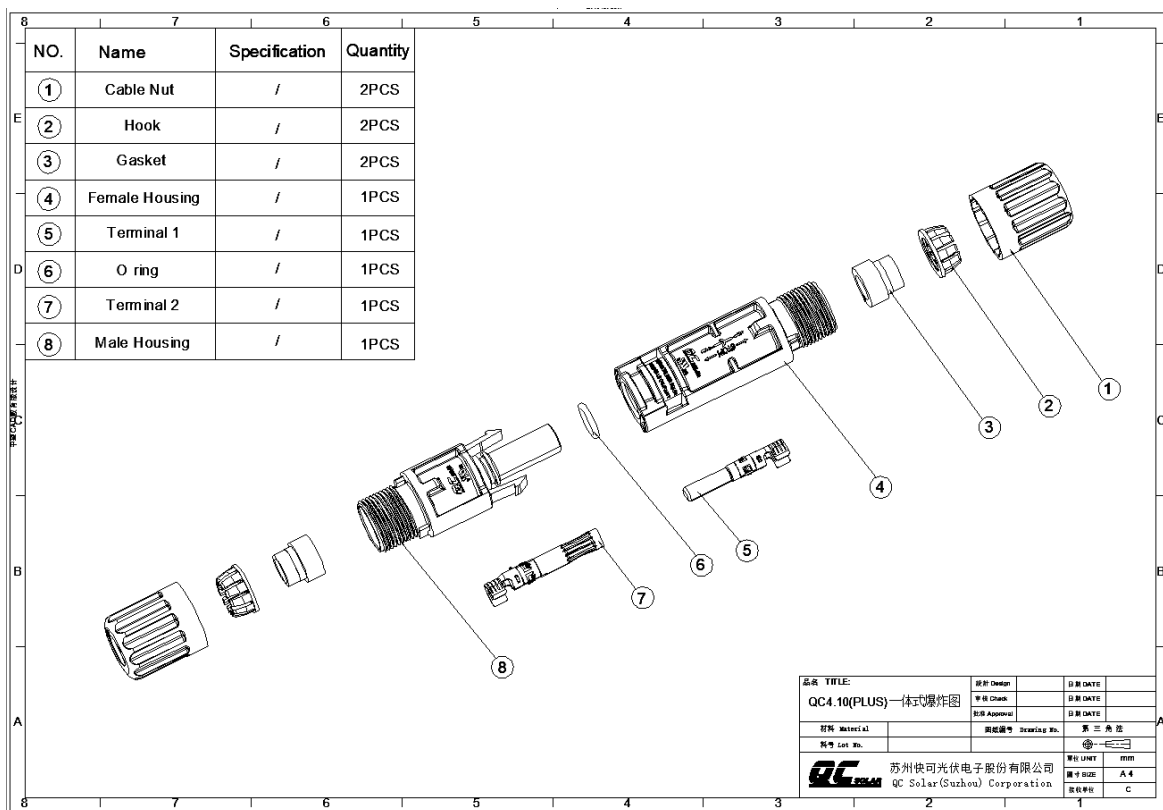
认证 Certificate	UL	TUV
名称 Product Name	Series QC4.10, followed by -a5, may be followed by none, followed by c12, c13, c14 or c15, followed by d1 or d3, followed by e2 or e4, may be followed by f1, and may be followed by g1.	QC4.10 (PLUS)
认证型号 Certified Model	QC4.10-a5CDEf1g1	QC4.10-cds
额定电压 Rated Voltage	UL1500V	IEC1500V
额定电流 Rated Current	30A for 14AWG 35A for 12AWG 50A for 10AWG	36A for 2.5mm ² 41A for 4.0mm ² 46A for 6.0mm ²
线缆规格 Cable Specification	90°C 2000V, Strands of Conductor 41~84/0.25~0.3, OD5.9~7.2mm, 14 AWG, 12 AWG, 10 AWG	IEC 1500V, Strands of Conductor 41~84/0.25~0.3, OD 4.7~7.2mm, 2.5mm ² , 4.0mm ² , 6.0mm ²
防护等级 IP degree	N/A	IP65/IP68(1m,1h)
安全等级 Protection Class	N/A	Class II
接触电阻 Resistance of Connector	Max 0.3mΩ	Max 0.3mΩ
防火等级 Flammability Class	UL94 V-0	UL94 V-0
温度范围 Temperature Range	-40°C~ +85°C	-40°C~ +85°C
Caution	Do Not Disconnect Under Load: PV plug connections must not be disconnected while under load. They can be placed in a no load state by switching off the DC/AC converter or breaking the AC circuit	N/A

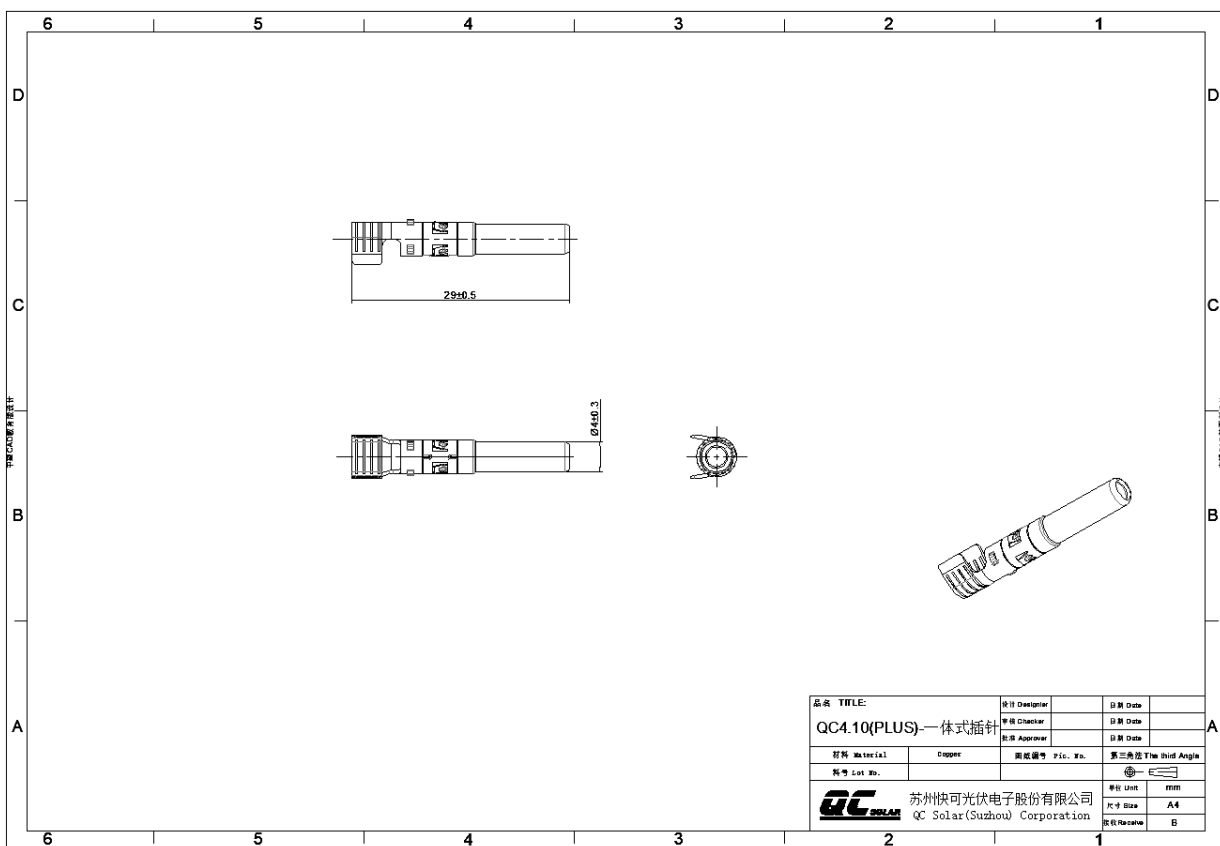
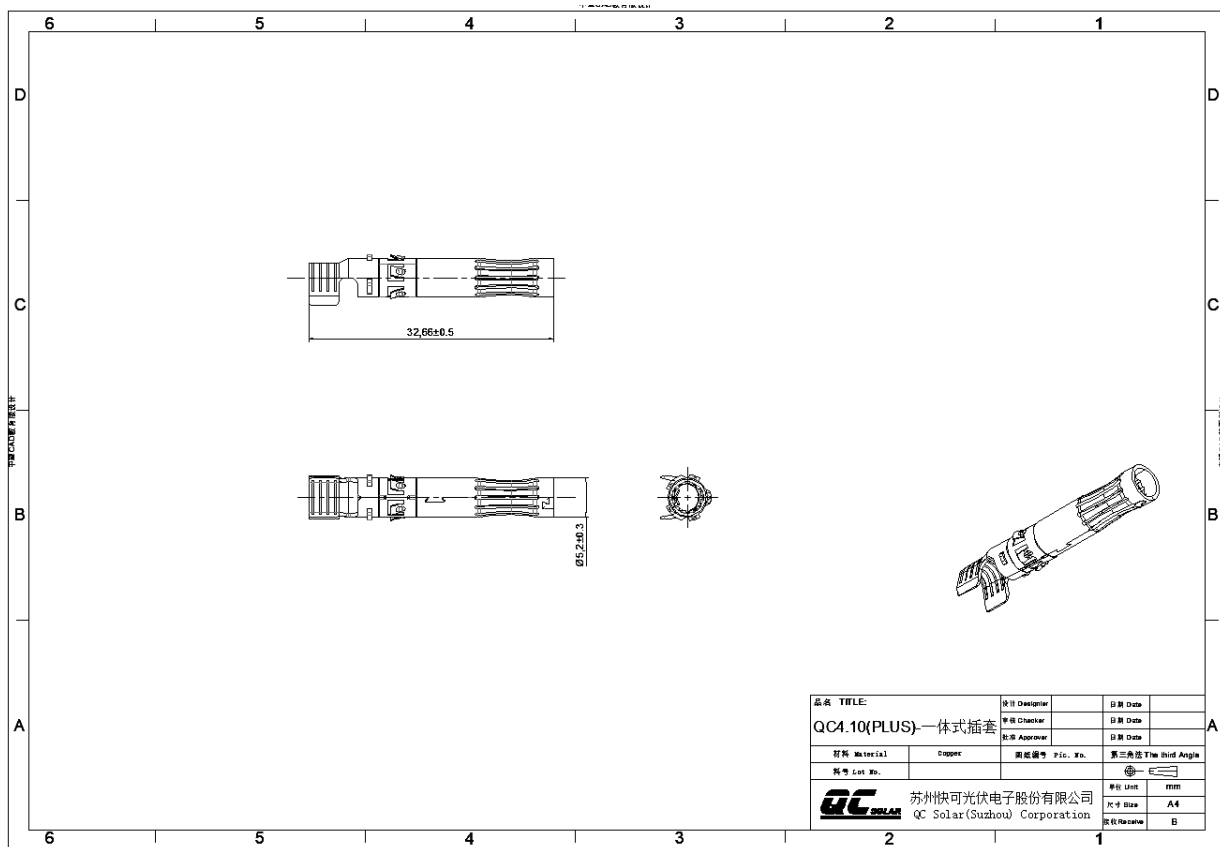
<p style="text-align: center;">UL 命名 UL NOMENCLATURE</p>	<p style="text-align: center;">TUV 命名 TUV NOMENCLATURE</p>
<p>NOMENCLATURE: QC4.10 – $\frac{X}{A} \frac{X}{B} \frac{X}{C} \frac{X}{D} \frac{X}{E} \frac{X}{F} \frac{X}{G}$</p> <p>Where:</p> <p>A – Maximum System Voltage a5 – 1500V</p> <p>B – Connector Type none – locking type</p> <p>C – PV Wire Type c12–2000V, 12AWG, 48/0.30 (str/dia) c13–2000V,12AWG,56/0.285 (str/dia) c14–2000V,10AWG,84/0.285 (str/dia) c15–2000V,14 AWG, 41/0.25 (str/dia)</p> <p>D – Material of Connector Housing d1 – EXL9330(GG)(X)(f1)(B1)(IP) d3 – PV40Z(f1)</p> <p>E – Material of Cover Nut e2 - A3XZG5(f1) e4 - PA66 T303(XX)GF BK - D(f1)</p> <p>F - construction f1 - Connectors with 18.6 mm outer diameter (Plus Construction)</p> <p>G – Type of Pin Crimp Connector (male) and SocketConnector (female) g1 – With an Electric Lock integrated, only for F=f1</p> <p>Caution:</p> <ol style="list-style-type: none"> 1.For Copper Stranded Wire Only. 2.The product installation and use meet the requirements of PV modules. 3.The connector is considered to be in compliance with UL 6703, Connectors for Use in Photovoltaic Systems, Edition 1, Revision Date 06/10/2021 only when assembled in the manner specified by these assembly instructions. <p>This connector is suitable for use only with Class B and C stranded copper conductors (See NFPA 70, National Electrical Code, Edition 2020, AMD 1 - 17, Revision Date 04/12/2022, Chapter 9, Table 10).</p>	<p>Type Designation: QC4.10-cds</p> <p>Remark: QC4.10-cds is a general designation. The prefix letter “c”、“d”、“s” denotes different technical and design meanings.</p> <p>1.c=3 or 4 c=3 denotes rated voltage 1500V with baffle plate; c=4 denotes rated voltage 1500V without baffle plate</p> <p>2.d=4 or 5 or 6 d=4 denotes rated current 36A with stamping; d=5 denotes rated current 41A with stamping; d=6 denotes rated current 46A with stamping;</p> <p>3.s= 1 (Plus constructure)</p> <p>Wire cross section area or cross section range: 1 x 2,5mm² for QC4.10-341; QC4.10-441; 1 x 4,0mm² for QC4.10-351; QC4.10-451; 1 x 6,0mm² for QC4.10-361; QC4.10-461;</p>

2. 连接器BOM清单 / Connector BOM List

苏州快可光伏电子股份有限公司 QC Solar (Suzhou) Corporation					
产品名称 Product Name	连接器 Connector	材料清单 Bill Of Materials		版本 Version	A/1
产品型号 Model	QC4.10-cds			张数 Page	1
客户 Customer	/			发行日期 Version Date	2022.08.11
序号 S/N	名称 Description	材质 Material	生产厂商 Manufacturer	数量 Quantity	备注 Remark
1	正极本体 Female housing	PPE	QC Solar	1 pcs	
2	负极本体 Male housing	PPE	QC Solar	1 pcs	
3	后罩 Screw cap	PA	QC Solar	2 pcs	
4	内爪 Cable clamp	PA	QC Solar	2 pcs	
5	堵头 Sealing gasket	硅橡胶 Silicon rubber	QC Solar	2 pcs	规格一 :4.7-6.0 (红色) 规格二 :5.6-6.8 (黑色) 规格三 :6.0-7.2 (红色)
6	红色 O 型圈 O sealing ring	硅橡胶 Silicon rubber	QC Solar	1 pcs	
7	插针 Metal plug	铜镀锡 Tin-plated copper	QC Solar	1 pcs	
8	插套 Metal socket	铜镀锡 Tin-plated copper	QC Solar	1 pcs	
以上原料符合欧盟 ROHS 要求 All the materials above are subject to RoHS requirement.					
制表: Written By:		审核: Reviewed By:		批准: Approved By:	

3. 连接器图纸 / Drawing of connector





4.连接器证书 / Certificates of connector




快速可靠, 成就客户!

Quick and reliable, QC Solar devotes to satisfying customers.



苏州快可光伏电子股份有限公司

QC Solar (Suzhou) Corporation

 中国苏州工业园区新发路 31 号 (No.31,Xinfa Road,SIP,Suzhou,China, 215123.)

 0086-0512-62603392

 market@quick-contact.com

 www.quick-contact.com



快可官方微信